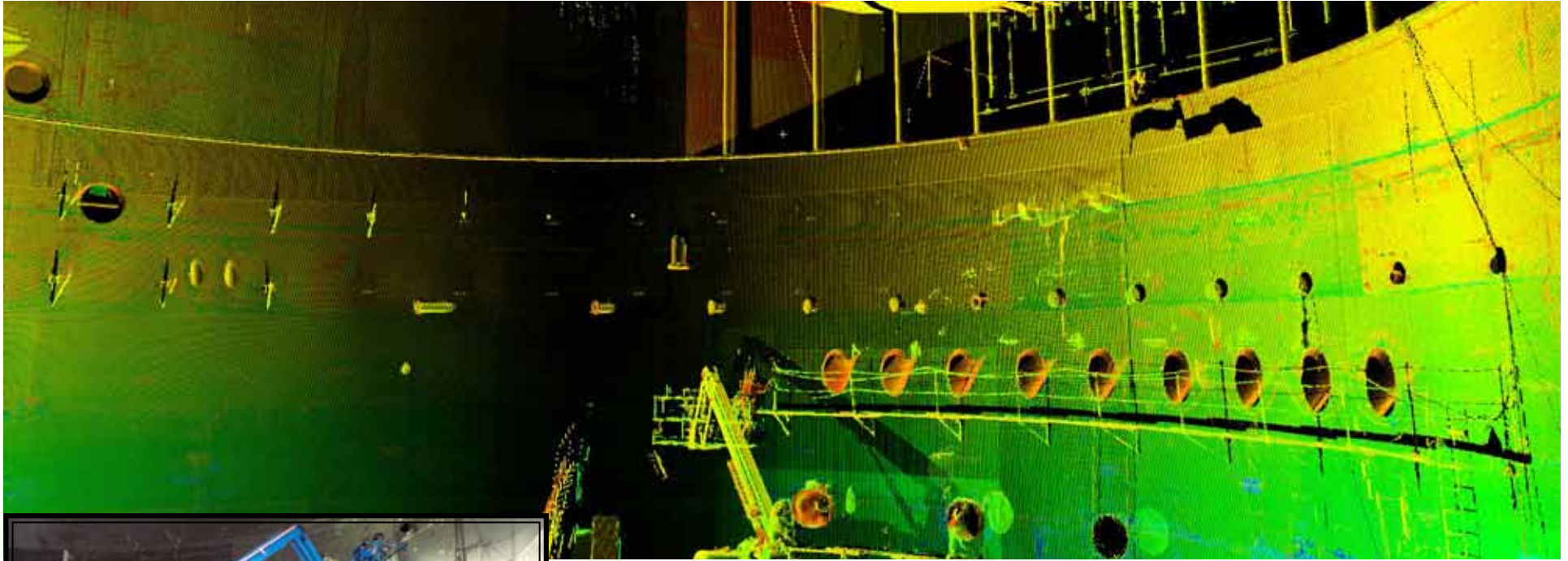


PROJECT TITLE:

## Brilliant Ohio Tank Scan



Actual Photo

<b>Project Location:</b>	Brilliant, Ohio
<b>Scope:</b>	3D Laser Scanning
<b>Self-Performed Work:</b>	3D Laser Scanning
<b>Construction Cost:</b>	N/A
<b>Project Start Date:</b>	November 2010
<b>BHC RHODES Client:</b>	Black & Veatch
<b>Contact Name:</b>	Shawn McCall
<b>Phone Number:</b>	(740) 598-1163

Black & Veatch is building a stainless steel Jet Bubbler Reactor tank for a power plant with an inside diameter of 95'6". To determine the actual tank face against design, they hired BHC RHODES to scan the tank with their 3D laser scanner. BHC RHODES was approached on a Friday and were onsite the following Monday to complete the field work and fly back to Kansas to carry out the processing and provide a deliverable to complete this urgent request. The 3D scan was provided in tandem with the other work being completed on the tank and provided Black & Veatch with an isopach surface and spreadsheet which contained approximately 30,000 measurements showing actual against design. This will allow Black and Veatch to modify the tank to meet design and strengthen the tank with braces.