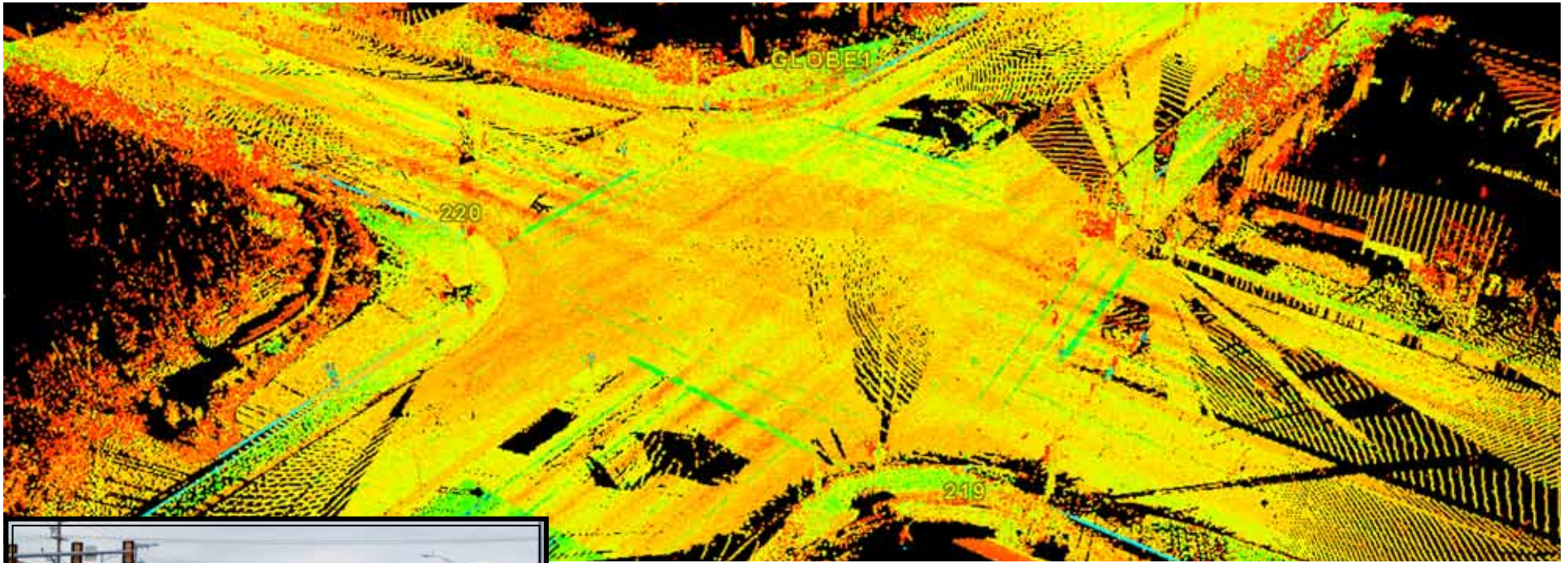


PROJECT TITLE:

College Blvd. and Antioch Rd. Intersection Improvements High-Definition Surveying



Actual Photo

The City of Overland Park, KS hired the firm of HNTB to provide improvements to the busy intersection located near Corporate Woods office park. Improvements were made to turn lanes, medians and the addition of ADA ramps. Collecting necessary measurements for the improvements caused a safety concern to field crews due to the large volume of traffic in the area. HNTB knew the benefits of using HDS on projects with difficult access areas and chose BHC RHODES to collect measurements and necessary data using our High-definitions Surveying (HDS). We performed the laser scanning and provided topographic surveys of the intersection without stepping foot into the traffic area and without disrupting normal traffic flow.

Project Location:	Overland Park, Kansas
Scope:	High-Definition Surveying (HDS)
Self-Performed Work:	High-Definition Surveying (HDS)
Construction Cost:	N/A
Project Start Date:	November 2007
BHC RHODES Client:	HNTB
Contact Name:	John Yoakum
Phone Number:	(913) 491-9333
Project Owner:	City of Overland Park, KS