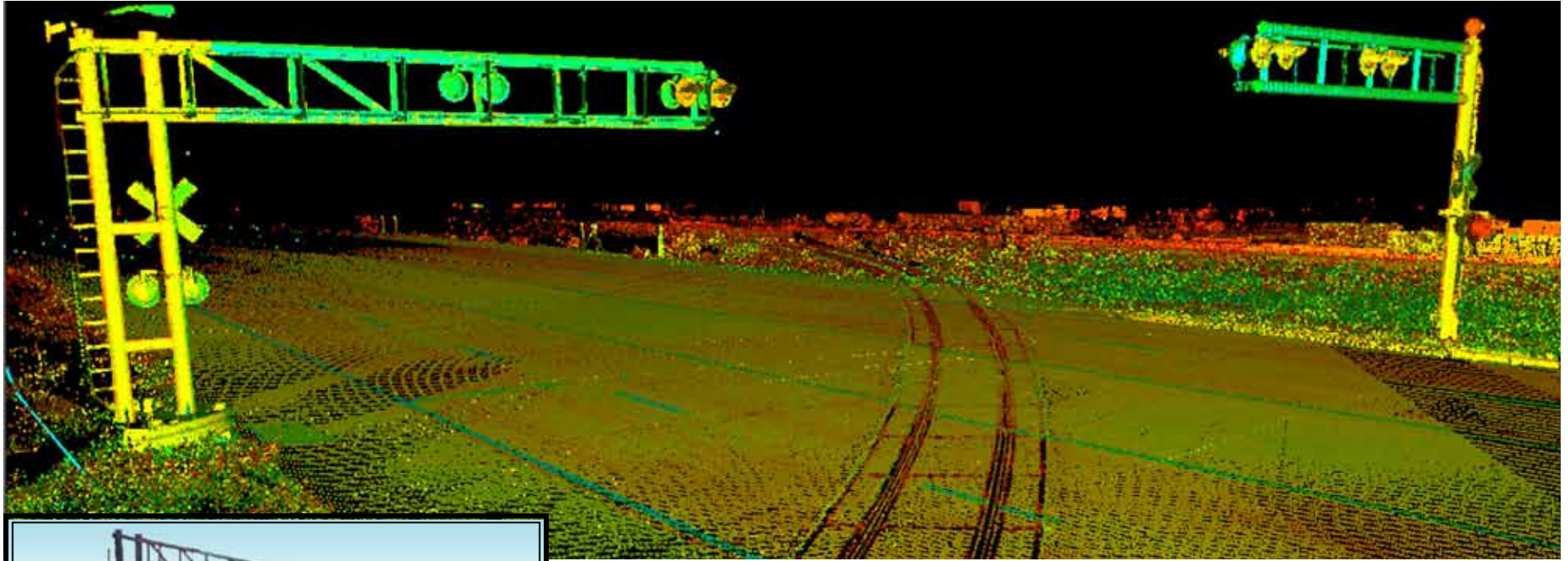


PROJECT TITLE:

Gardner, KS Railroad Crossing High-Definition Surveying (HDS)



Actual Photo

Railroad panels needed replaced at a railroad crossing in Gardner. Safety was at the forefront of concern, and traditional surveying would require a survey crew to occupy the tracks. BHC RHODES was contacted to utilize high-definition surveying (HDS) instead of traditional surveying to ensure safety. Using HDS, we laser scanned the crossing producing a topographic base map in MicroStation format. This provided accurate information without having a survey crew occupy the track. Months later the City requested additional information about the area. Having the historical data already in-house, we provided the data needed without making an additional site visit as a crew would have to do with traditional surveying methods. This saved the City additional funds.

Project Location:	Gardner, Kansas
Scope:	High-Definition Surveying (HDS)
Self-Performed Work:	High-Definition Surveying (HDS)
Project Start Date:	June 2008
BHC RHODES Client:	Transystems
Contact Name:	Ivan Bird
Phone Number:	(816) 329-8600