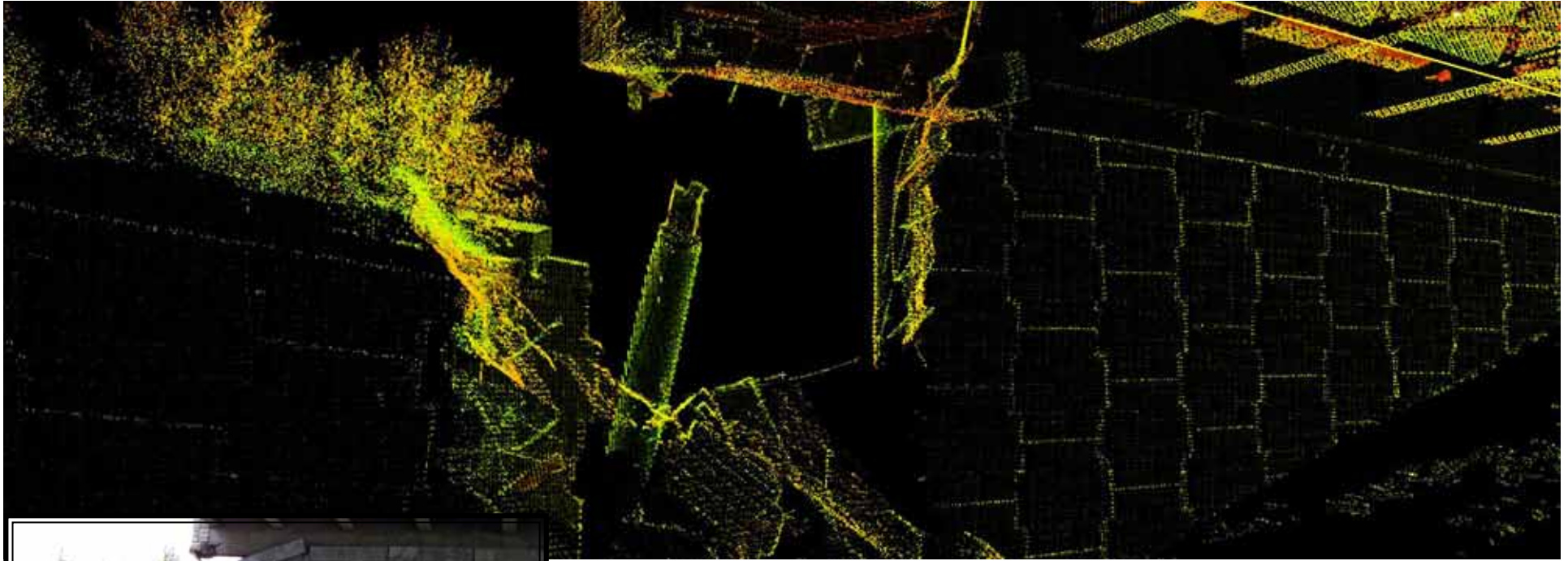


PROJECT TITLE:

## I-470 Ramp Failure at Three Trails Crossing Interchange (Grandview Triangle)



Actual Photo

Three Trails Crossing Interchange (Grandview Triangle) is one of the busiest interchanges in the Kansas City metro. A ramp on the interchange received heavy damage which MoDOT engineers believe was due to a subsurface soil failure from groundwater build up beneath a retaining wall. MoDOT hired BHC RHODES to use their 3D laser scanning service, which is much more detailed than what could have been obtained with conventional surveying, to collect data of the failure and use it to produce a digital terrain model. MoDOT's engineers and HNTB Corporation utilized the model to help calculate earthwork volumes and supplement design of the needed repairs.

<b>Project Location:</b>	Lee's Summit, Missouri
<b>Scope:</b>	3D Laser Scanning
<b>Self-Performed Work:</b>	3D Laser Scanning
<b>Construction Cost:</b>	N/A
<b>Project Start Date:</b>	July 2010
<b>BHC RHODES Client:</b>	HNTB Corporation
<b>Contact Name:</b>	Jim Kinder, P.E., Senior Project Manager
<b>Phone Number:</b>	(816) 527-2282