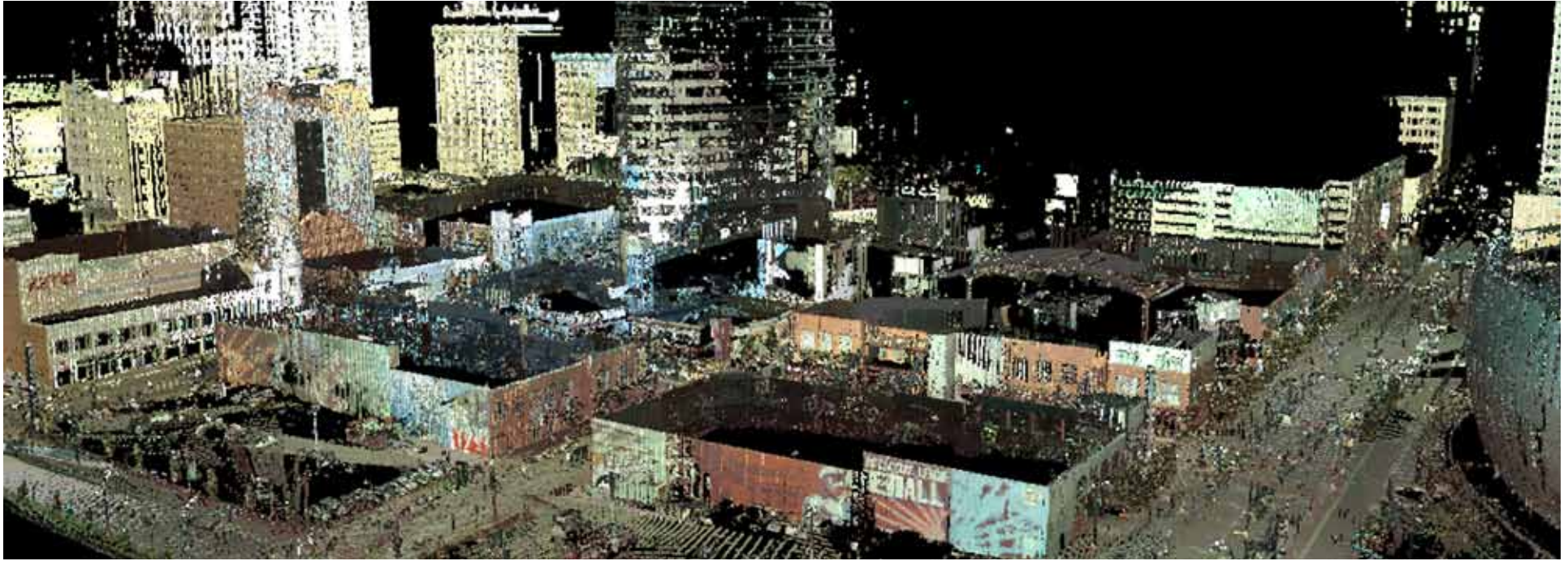


PROJECT TITLE:

## Kansas City Power & Light District ALTA Survey



<b>Project Location:</b>	Kansas City, Missouri
<b>Scope:</b>	ALTA/ACSM Land Title Survey
<b>Self-Performed Work:</b>	High-Definition Surveying (HDS)
<b>Construction Cost:</b>	N/A
<b>Project Start Date:</b>	August 2009
<b>BHC RHODES Client:</b>	The Cordish Companies
<b>Contact Name:</b>	Tunnie Ping
<b>Phone Number:</b>	(410) 347-2942
<b>Project Owner:</b>	The Cordish Companies
<b>Contact Name:</b>	Tunnie Ping
<b>Phone Number:</b>	(410) 347-2942

BHC RHODES' involvement with Kansas City's "liveliest streets" goes deep underground with telecom design, and air bound with 3-D High-Definition laser scanning (HDS). Most recently The Cordish Companies selected BHC RHODES to provide an ALTA Survey of seven city blocks in the Power & Light District. Using a combination of technologies including high-definition scanning and robotic total stations we completed the project on time and on budget.