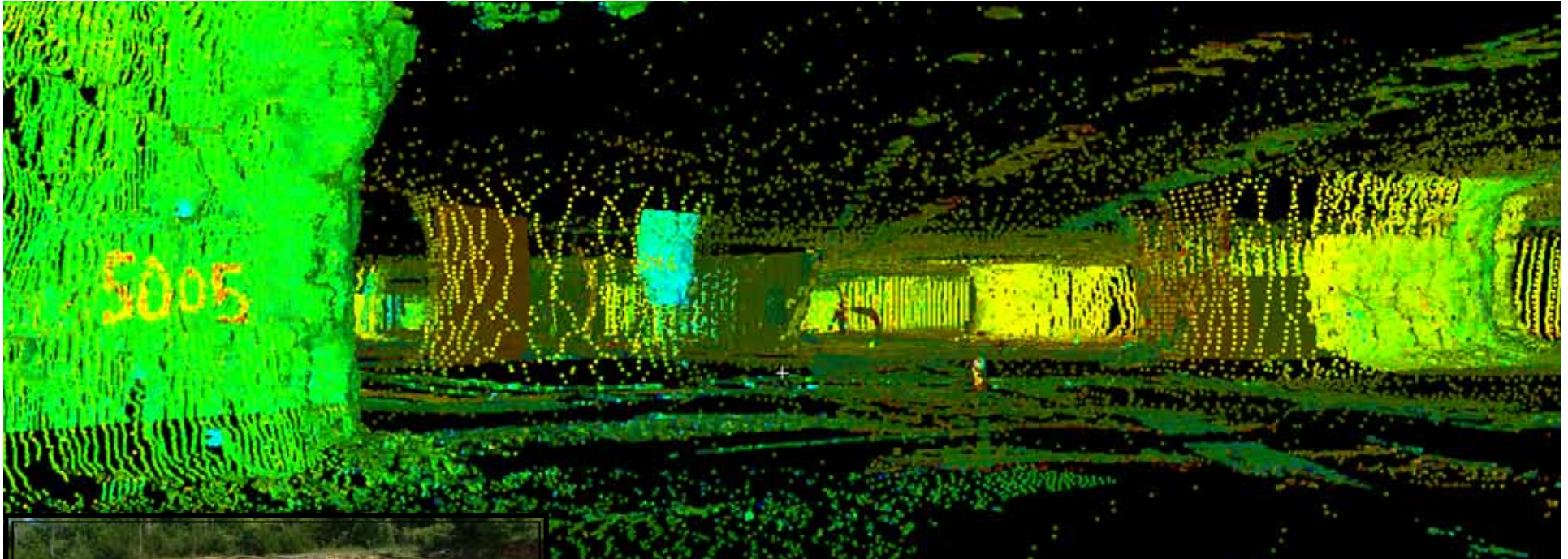


PROJECT TITLE:

Lenexa Mine High-Definition Surveying (HDS)



Actual Photo

87th Street in Lenexa was being re-routed and expanded as part of a street improvement plan. The re-route of the street placed it directly over the Lenexa mine that is no longer in use. The re-route over the mine would require columns to be inserted inside the mine to support the road. BHC RHODES was selected to perform high-definition surveying (HDS) for a feasibility study on 14 acres of sub-surface mine. We laser scanned the sub-surface area and produced terrestrial lidar survey and a column and mine face map. With the laser scan we were also able to provide a dtm surface on the floor and ceiling of the mine.

Project Location:	Lenexa, Kansas
Scope:	High-Definition Surveying (HDS)
Self-Performed Work:	High-Definition Surveying (HDS)
Construction Cost:	N/A
Project Start Date:	October 2007
BHC RHODES Client:	URS Corporation
Contact Name:	Jamie Martens
Phone Number:	(913) 344-1000